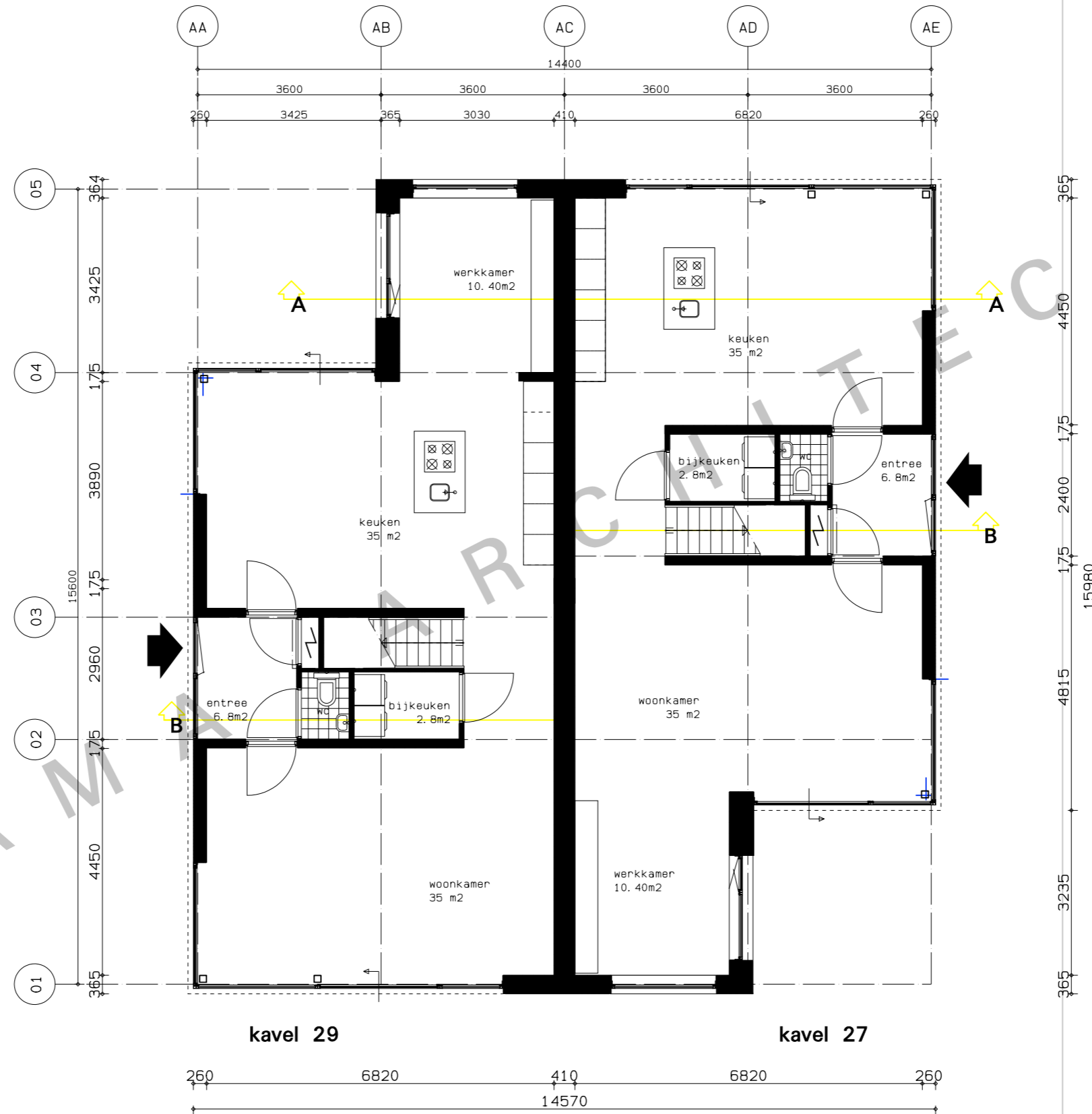


Watervilla Terborch Tynaarlo
opdrachtgever : fam. J. Visser & fam. S. Kingma

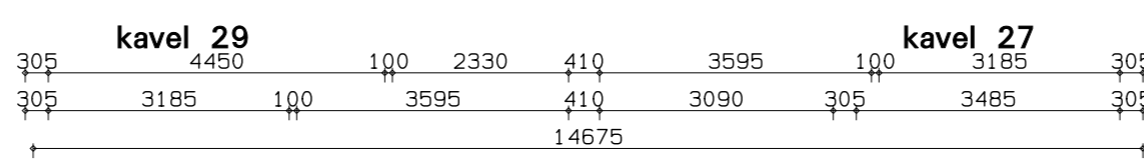
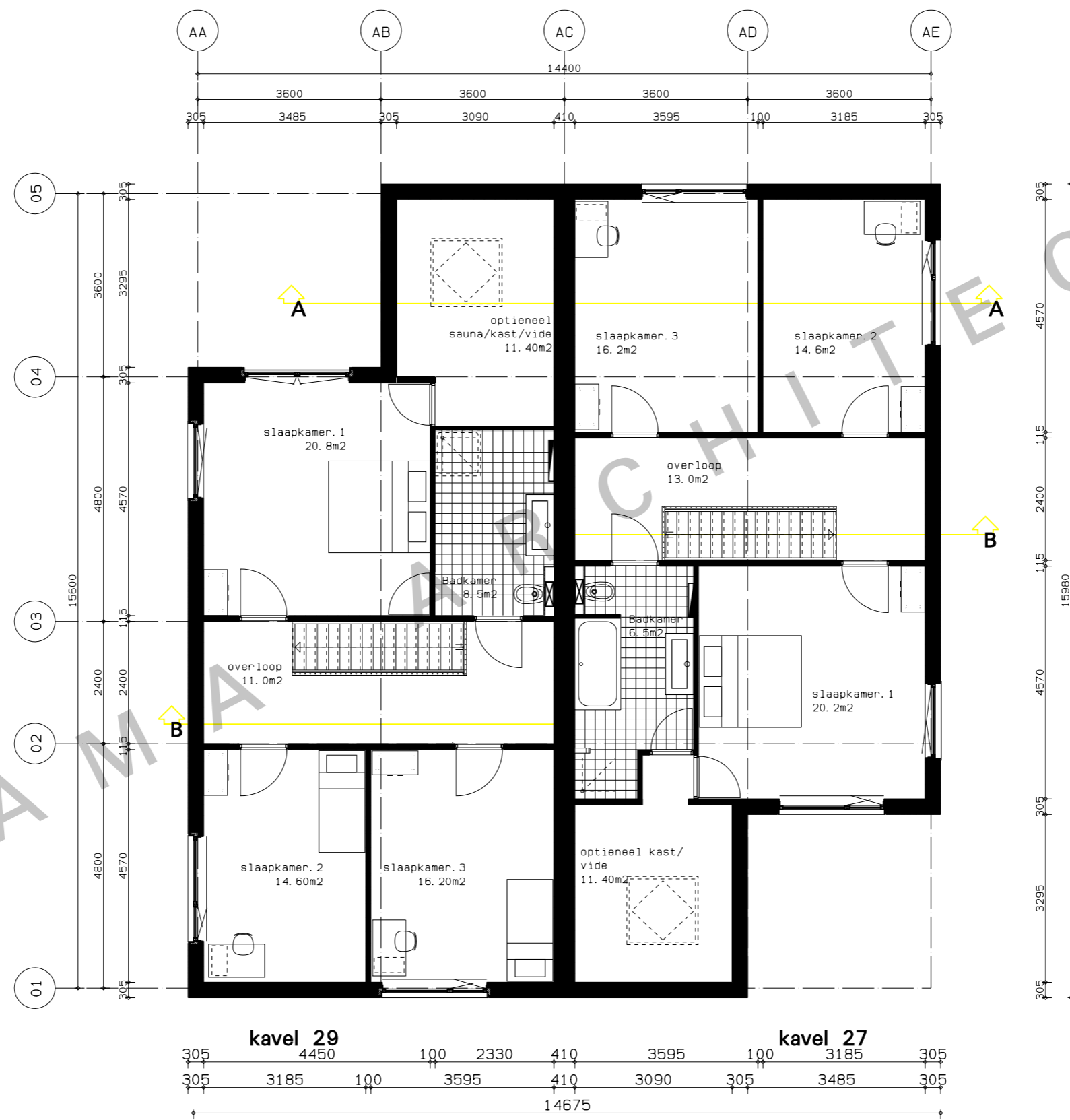


BEGANE GROND straatkant

W a t e r v i l l a T e r b o r c h T y n a a r l o

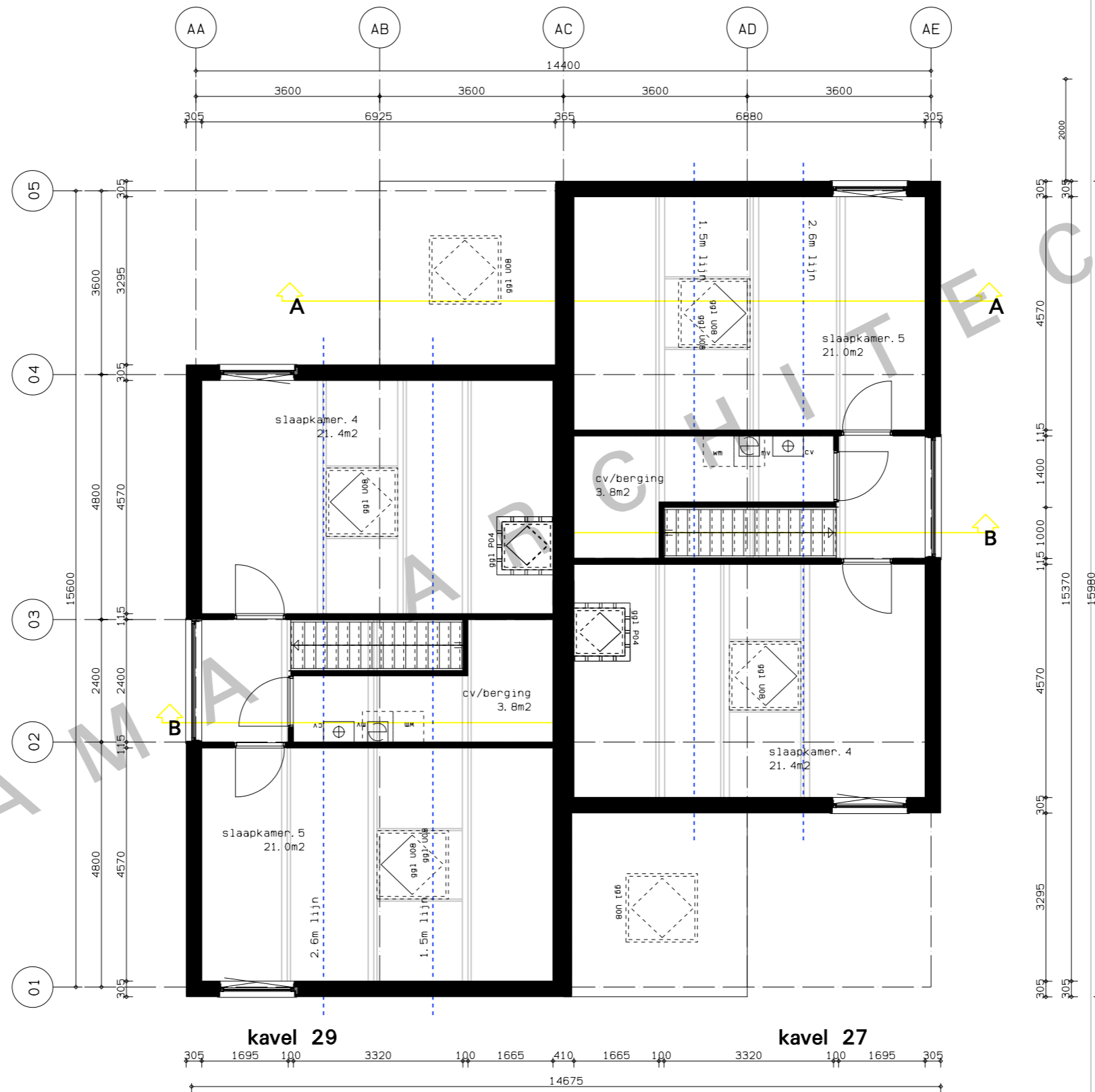
opdrachtgever : fam. J. Visser & fam. S. Kingma

B A H A M A A R C H I T E C T E N



1e VERDIEPING straatkant

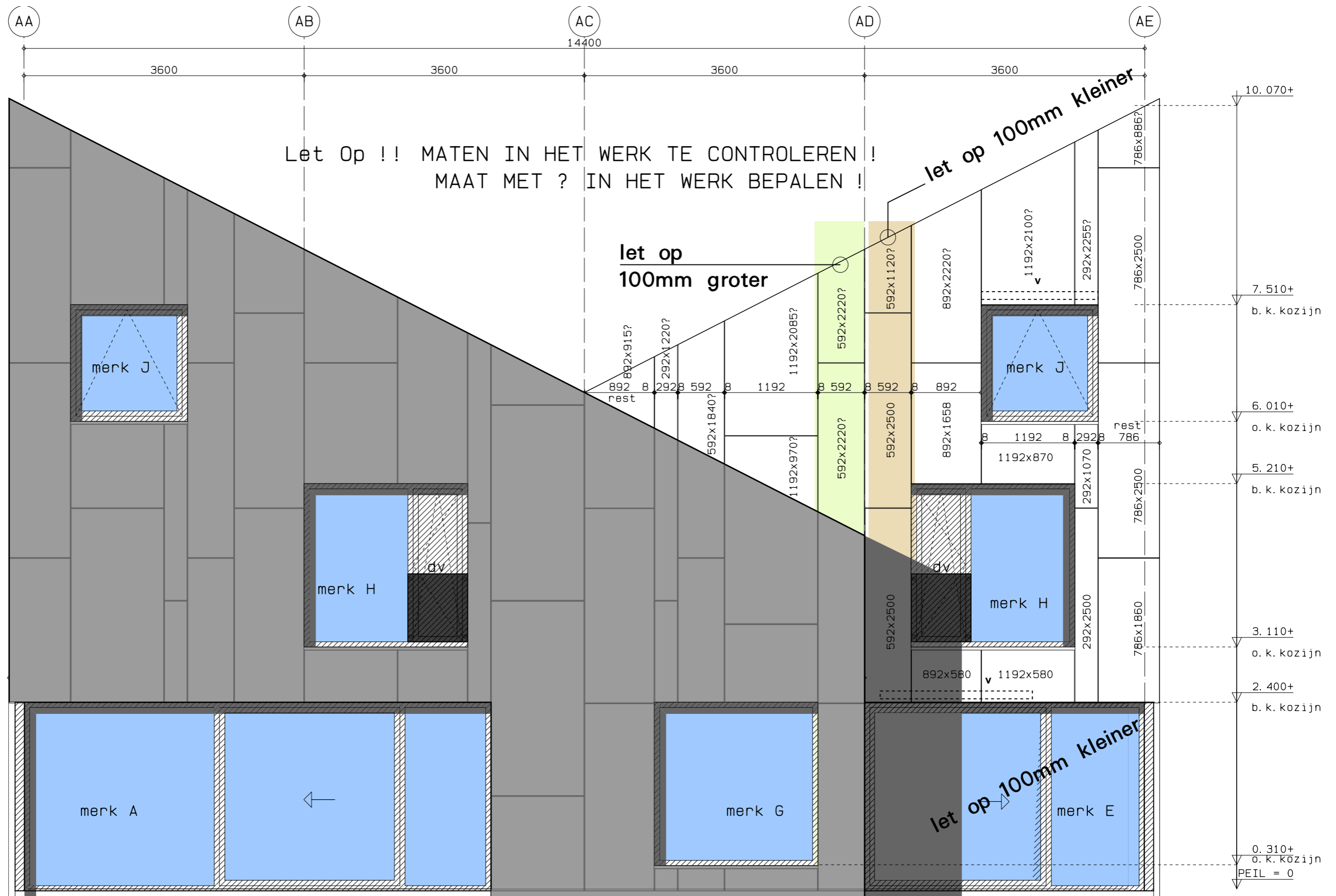
W a t e r v i l l a T e r b o r c h T y n a a r l o
opdrachtgever : fam. J. Visser & fam. S. Kingma



2^E VERDIEPING straatkant

W a t e r v i l l a T e r b o r c h T y n a a r l o

opdrachtgever : fam. J. Visser & fam. S. Kingma



kavel 29

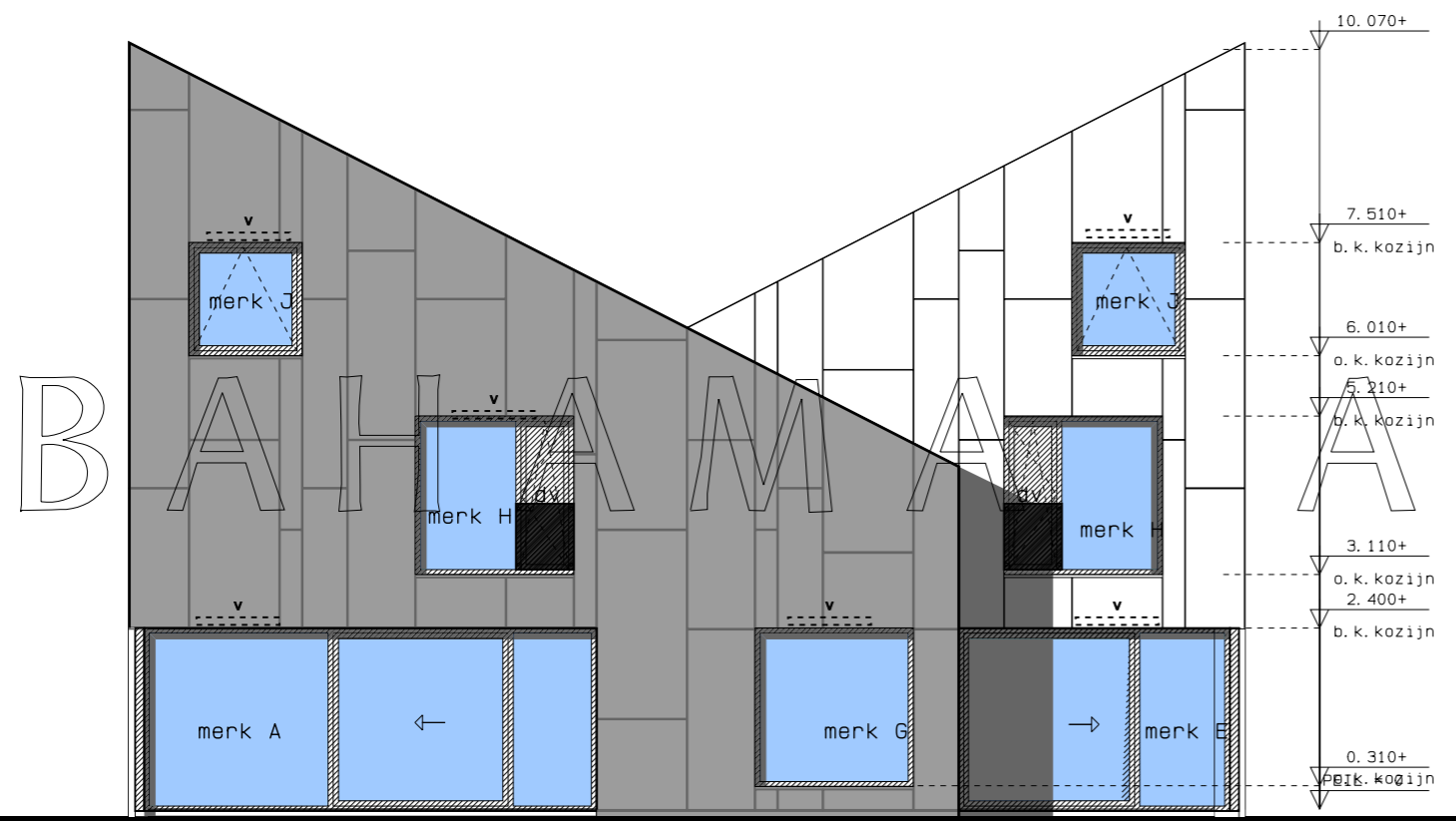
v
 = duco ventilatie rooster cap 15.0

kavel 27

dv
 ■■■■■ = doorvalbeveiliging (veiligheidglas)

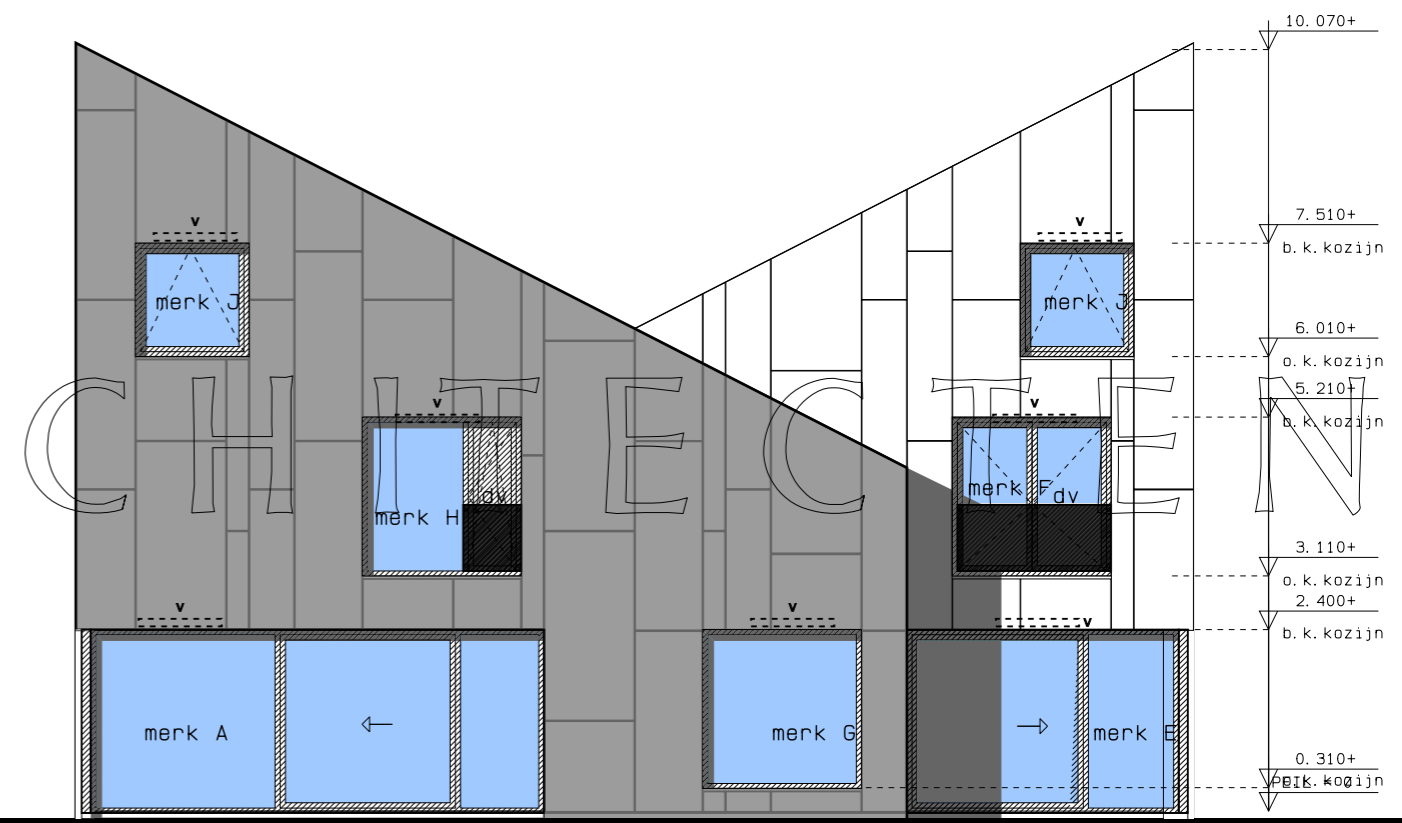
ACHTERGEVEL straatkant

gewijzigd 09-02-2010



v
----- = duco ventilatie rooster cap 15.0

ACHTERGEVEL_{straatkant}

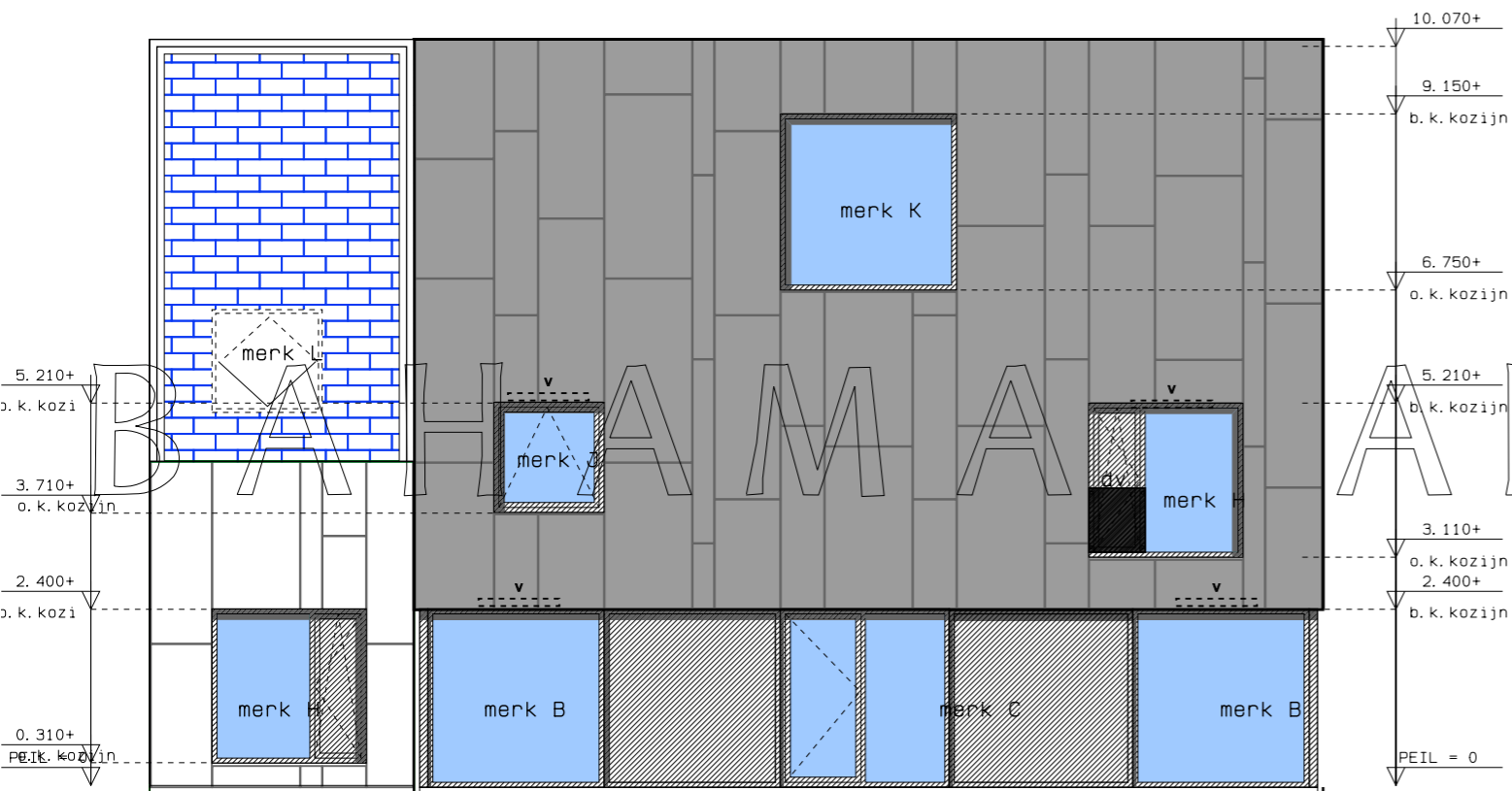


v
----- = duco ventilatie rooster cap 15.0

VOORGEVEL_{waterkant}

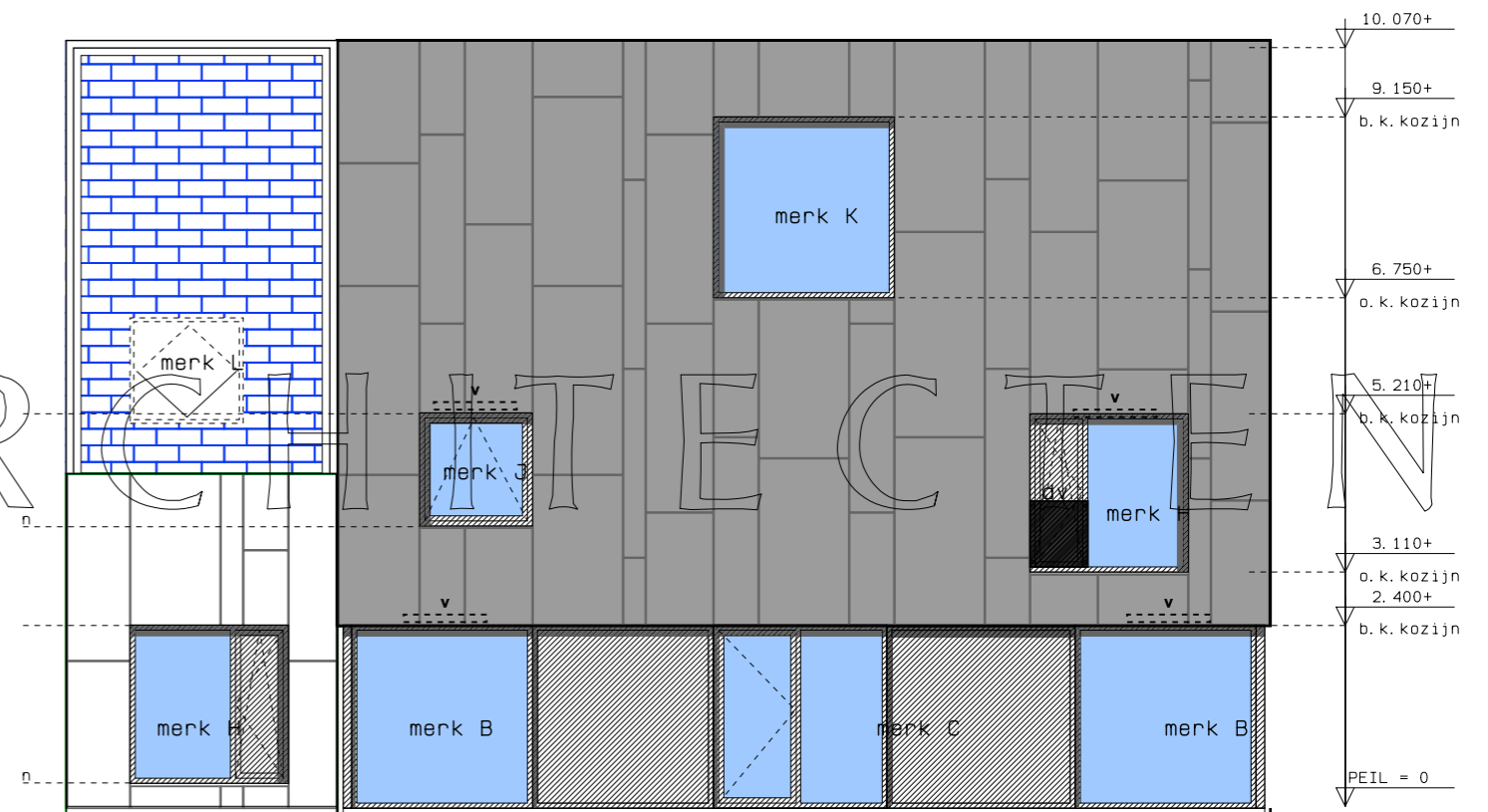
W a t e r v i l l a T e r b o r c h T y n a a r l o

opdrachtgever : fam. J. Visser & fam. S. Kingma



v
----- = duco ventilatie rooster cap 15.0

GEVEL kavel 29

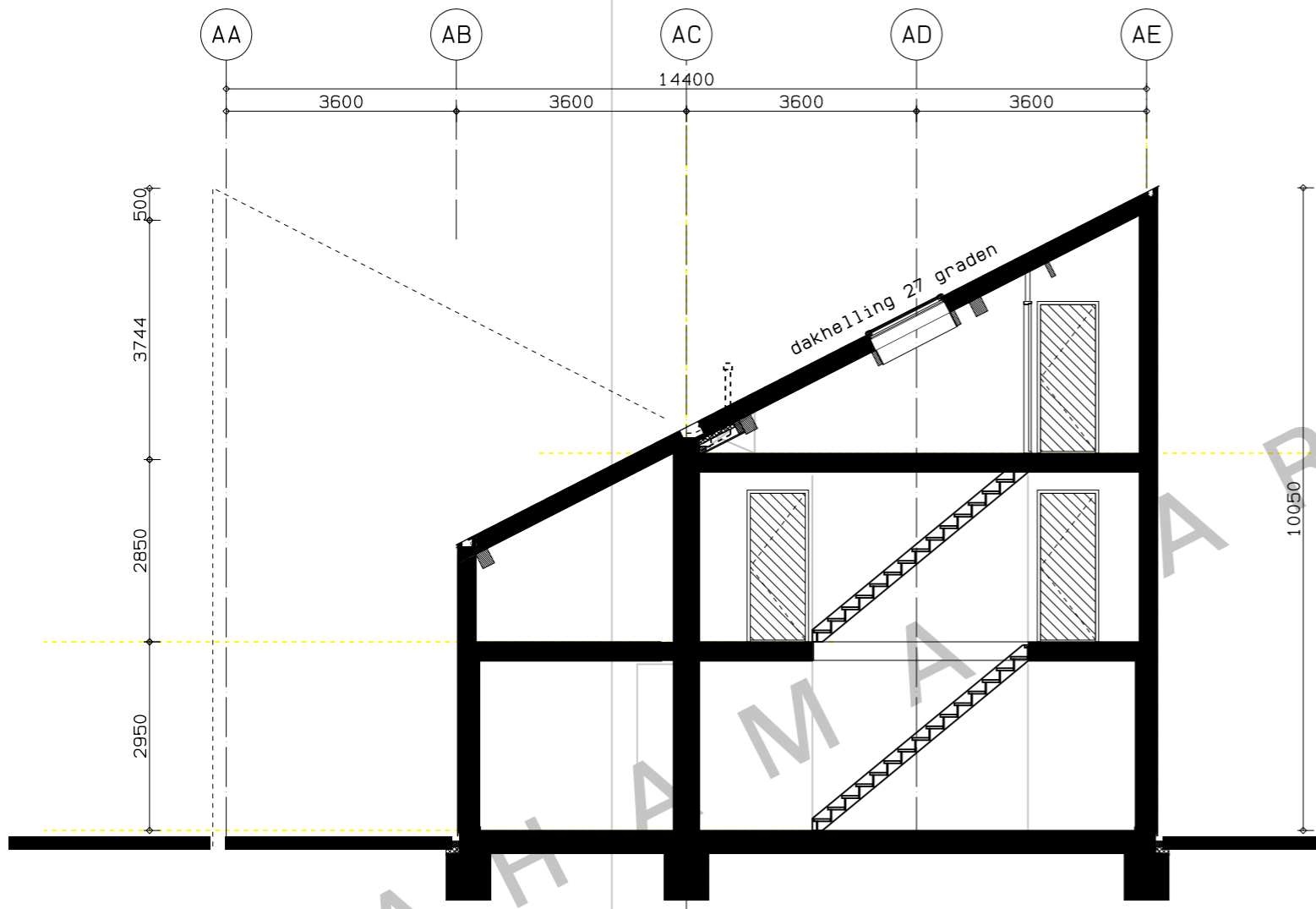


v
----- = duco ventilatie rooster cap 15.0

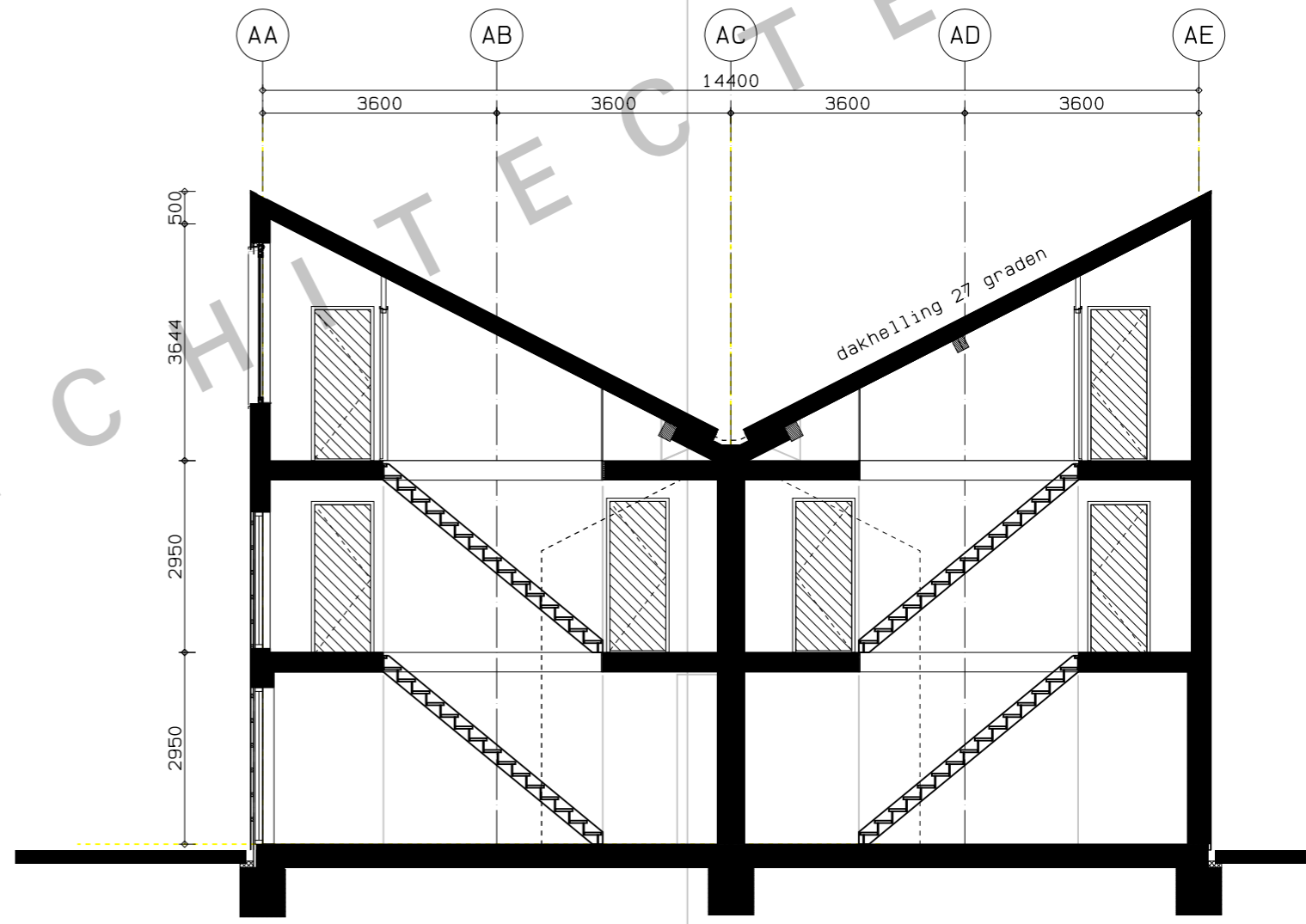
GEVEL kavel 27

W a t e r v i l l a T e r b o r c h T y n a a r l o

opdrachtgever : fam. J. Visser & fam. S. Kingma



DOORSNEDE A-A



DOORSNEDE B-B

W a t e r v i l l a T e r b o r c h T y n a a r l o

opdrachtgever : fam. J. Visser & fam. S. Kingma