

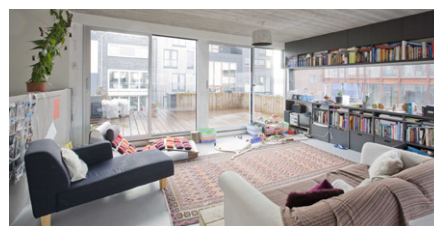
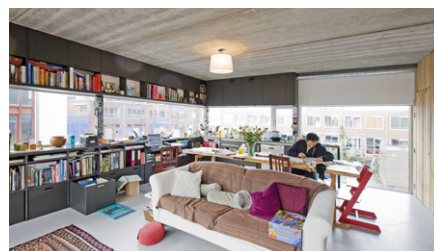
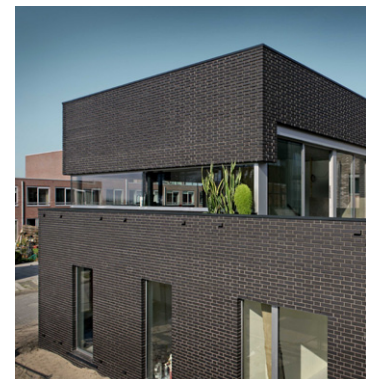
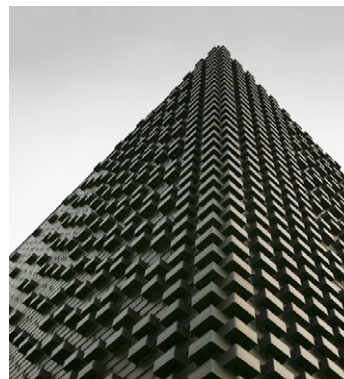
house like garden

Private House in IJburg, Amsterdam 2005-2008



The house is located on a small plot in IJburg, a recently developed suburb of the city of Amsterdam. The house is designed as a vertical garden giving space to flora and fauna to grow in a densely urbanized area. Closed private spaces contrast with open collective spaces, that seem to have been 'carved out' from the solid volume as a continuous transparent void. In this way the interior space is visually and physically connected to the street, the garden and roof terraces.

Outdoor and indoor spaces become one and natural daylight flows into the interior. Three bedrooms, a small bathroom, WC and a 'multipurpose hall' are situated on the groundfloor whereas the first floor remains completely open for living, cooking and eating, flooded with daylight. The multipurpose hall on the groundfloor is much more than an enter zone. It also functions as an artist studio, workdesk, laundrette and playground. Storage and service spaces are invisibly integrated in thick walls keeping the living spaces as open, transparent and flexible as possible.



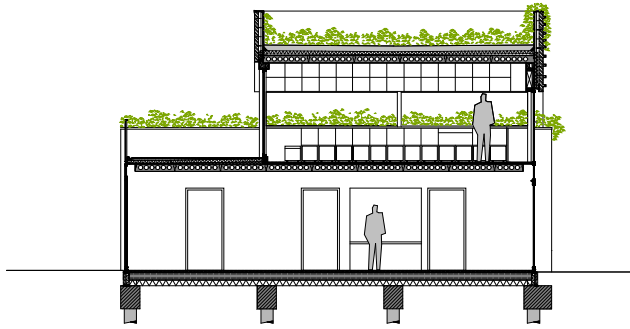
contact

marc koehler architects
keizersgracht 126
1015 cw amsterdam
+31(0)20 575 5508
welkom@marckoehler.nl
marckoehler.nl

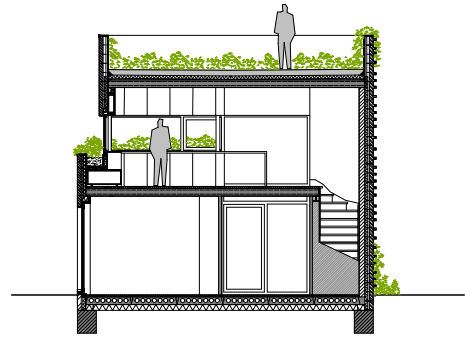
Client: Elmar, Machteld and Kawai van den Elzen
Floor space area - brutto: 140 m² + 75 m² roof terrace
Construction and design costs (inc. BTW): 250.000 Euro
Design team: Marc Koehler, Kasia Heijerman, Dick Kleijn, Jurian Knijffijzer, Wouter Hendrikson, Dennis de Haan
Interior design: Made up interior works and Marc Koehler
Photography: Marcel van der Burg

house like garden

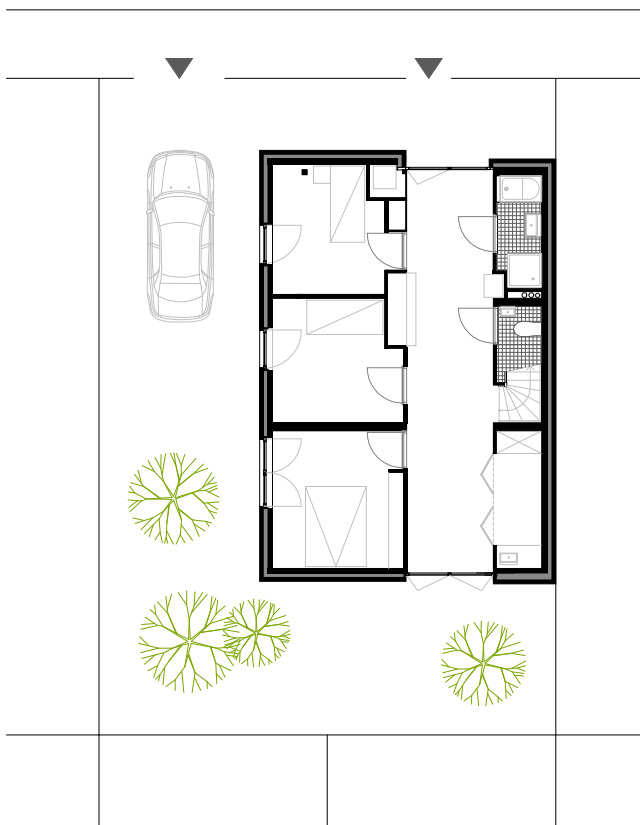
Private House in IJburg, Amsterdam 2005-2008



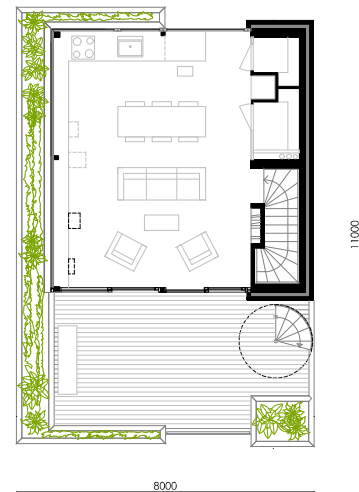
long section



cross section



groundfloor plan



first floor plan

contact

marc koehler architects

keizersgracht 126

1015 cw amsterdam

+31(0)20 575 5508

welkom@marckoehler.nl

marckoehler.nl

Client: Elmar, Machteld and Kawai van den Elzen

Floor space area - brutto: 140 m² + 75 m² roof terrace

Construction and design costs (inc. BTW): 250.000 Euro

Design team: Marc Koehler, Kasia Heijerman, Dick Kleijn, Jurian Knijffijzer, Wouter Hendrikson, Dennis de Haan

Interior design: Made up interior works and Marc Koehler

Photography: Marcel van der Burg